

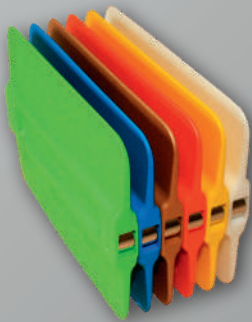
## TonnyMag Basic

Our dear friend **Tonny Hubert from Denmark** invented the popular hybrid mix of squeegee and magnet and a fantastic two in one squeegee magnet tool was born!

Unfortunately since he was dependent on external injection molding suppliers, his choices were limited and was only able to offer his tool in a single plastic version which was not ideal for many users so this had to be changed!

### Yellotools is proud to announce a new product partnership!

We will now exclusively produce and distribute this unique patented idea in our very own popular spectrum of firmness grades! And as always, using only the best certified plastics, that are free from hazardous substances, harmful plasticizers and carcinogenic ingredients. The two, laterally integrated gripper blades "park" the doctor blade on all metallic surfaces - thanks to the enormous holding power of the TonnyMag, and can also help position and align digital prints and plotted graphics too.



The TonnyMag Basics are available in six different shores!

Green (40° Shore),  
Blue (62° Shore),  
Antistatic (70° Shore),  
Gold (72° Shore),  
Orange (82° Shore)  
and Teflon (93° Shore)



Suitable self-adhesive protective strips "YelloWings" are also available!



## WrapSlipCut MagicMaster

In the world of advertising technology or CarWrapping it really is so much about „personal preference“ ...!

**Robin Boes - (CarWrap Legend and World-renowned foil coach)** likes cutting the way that the WrapStraight Cuts allows and since he was appy with our Teflon-refined hard squeegee, we digned one with CNC-cut parallel slots. We also provided distance cuts for vehicle edges and window frames.



Also here: 2-in-1 version for distance cuts inside and out with variable thickness.

## ProWrap Soft

The ingenious tinkerers and innovative advertising technician Philipp Schirmer from **hegau-werbetechnik.de** wanted an even softer squeegee than our already „fluffy“ Green version.

### It easy, but good things rarely are dear Philipp ...

but our plastic shapers had a few tricks up their sleeves in their „Witch kitchen“ and they concocted yet another brew potions just for you! Introducing the ProWrap Soft with a Shore hardness of 35 degrees. Great Suitable for even the most difficult contours!





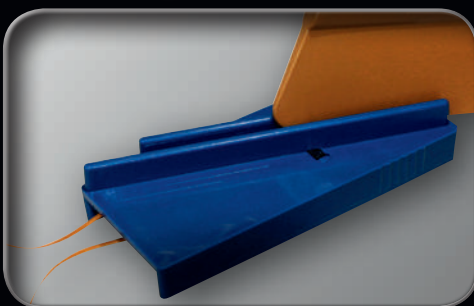
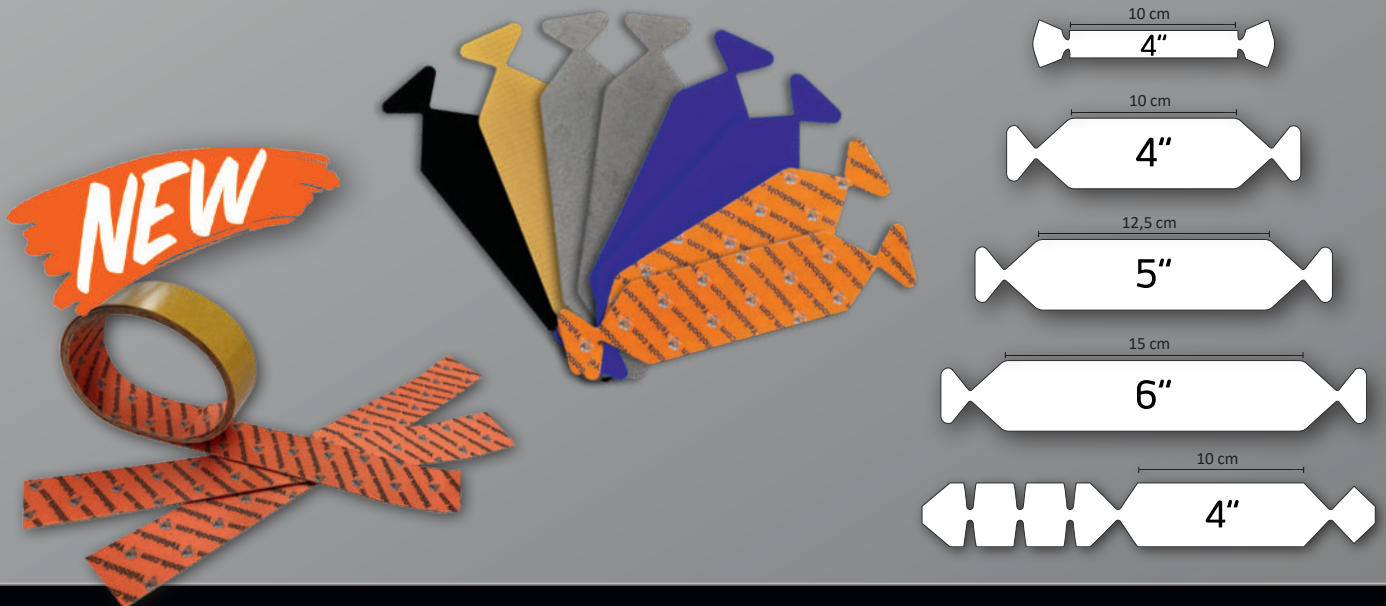
For many applications it's mandatory to cover the blades of squeegees. Either to protect the Vinylsurface from scratching or to improve gliding abilities a wide range of fabrics is used. Since more than 10 years, we at Yellotools produce and provide the genius Buffershape Idea of **Vinylexpert ROBIN BOES** which guarantees a perfect coverage of all squeegee edges. Upon your requests, we enlarged the range of Buffers and want to give you a better overview of all available Vinylprotections. Next to the approved, thin Fabric coatings „**SlimSkin**“ which provides a direct contact to your vinyls we now offer a more padded „**BigBuffer**“ Version. This more cushioned Version is also ideal for all Wet-Applications **ON TOP** of your Vinyl Surface.

But like in many different Signmaking/Carwrapping applications even the use of either „SlimSkin“ or „BigBuffer“ is really based on your personal preference.

We offer the most common Sizes like 4", 5" or 6" as the approved wingshaped Buffers as also customized versions for our favourite AllStar Squeegee and Yello ProWrap BETTY. You can also now get the most of our Fabrics as Stripes in about 100cm length and 2,5cm width as well.

**As of the Variations of Fabrics you can choose between:**

- Felt** - for all coarse-pored Surfaces like FOREX, Coroplast etc.
- Micro** - Alcantara-like microfiber, for many even Surfaces
- Microfine** - Tenuous surface texture for sensitive Vinyls
- Poly** - DbS Tony Hancock, USA. This elastic Polymere ist extremely stressable and very durable
- Teflon** - This Wing improves the gliding ability of your squeegee big time



**Squeegee Dragster**  
Now you can fix little scratches and damages on squeegee edges.



**YelloMini HangLoose**  
Mini Squeegees angled in 45° and 90°.

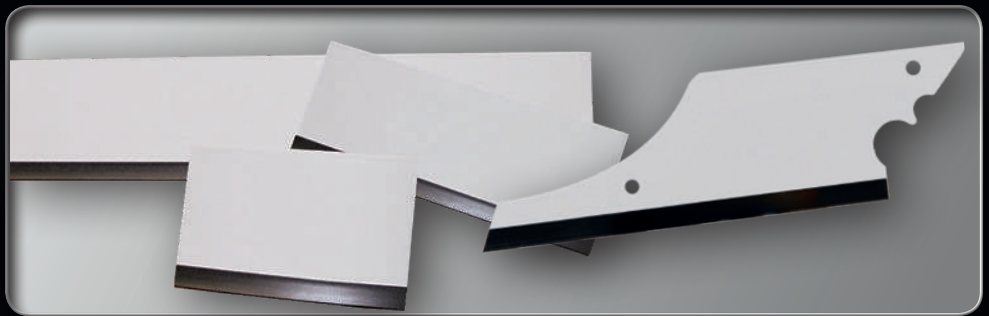


**YelloGrip**  
Grip for squeegees. Available in three sizes: 4", 6" and 12".



**YelloFelt Grip**

100% pure natural felt squeegees with replaceable felt strips!



**YelloFlex & YelloFlex Shape**

Ultra flat with a soft rubber edge. 4", 6" and 12" width and "shape".

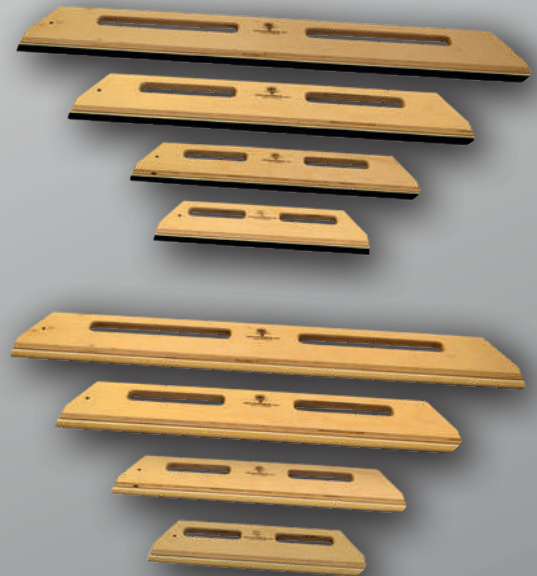


**FeltBloc**

Made of combed natural felt. Different sizes available. Give us a call for your desired size!



**TimberMaxx Lip**



**TimberMaxx**



TM 165



The XXL-Squeegees are perfect for big applications on windows and all even surfaces. Available in eleven sizes! From 30cm to 165cm.

TimberMaxx with flexible lip as squeegee blade. Velvet or microfibre. Available from 30 cm to 165cm.



We use only the best certified plastics that are free from hazardous substances, harmful plasticizers and carcinogenic ingredients. Just think about how often you hold your squeegee in your mouth... Our injection molding machines also produce our best selling YelloBlade and our vinyl roll holder SpeedClip with over two million sold units world-wide!

soft ← **Squeegee overview** → hard

	<b>G</b> Green	<b>BL</b> Blue	<b>B1</b> Bio1	<b>A</b> Antistatic	<b>GL</b> Gold	<b>C</b> Clean	<b>P</b> Pink	<b>O</b> Orange	<b>B2</b> Bio2	<b>BL</b> Black	<b>PKT</b> Peekaboo	<b>T</b> Teflon
	40°	62°	62°	70°	72°	72°	72°	82°	82°	88°	89°	93°
	YT10PT G04 3,99 €	YT10PW B04 1,99 €	YT10PW BIO01 3,99 €	YT10PW ANT101 3,99 €	YT10PW G04 2,99 €	YT13PW CA01 3,99 €	YT13PW P04 2,99 €	YT10PW O04 2,99 €	YT10PW BIO02 3,99 €	YT10PW BK04 3,49 €	YT11PW P04 3,99 €	YT10PW T04 3,49 €
	YT12D G02 3,99 €	YT12D B01 3,49 €	YT12D BIO01 4,99 €	YT12D ANT101 4,99 €	YT12D G01 3,99 €	YT13D CA01 4,99 €	YT13D P01 3,99 €	YT12D O01 3,49 €	YT12D BIO2 4,99 €	YT12D B02 4,99 €	YT12D P02 4,99 €	YT12D T01 4,99 €
	YT13PB G01 4,29 €	YT10PB B04 2,49 €	YT13PB B01 4,49 €	YT13PB A01 4,49 €	YT10PB G04 3,49 €	YT13PB CA01 4,49 €	YT13PB P01 3,49 €	YT10PB O01 2,49 €	YT13PB B02 4,49 €	YT13PB B03 3,99 €	YT13PB P02 4,49 €	YT13PB T01 3,99 €
	YT15MM GR05 4,59 €	YT15MM B05 2,99 €	YT15MM BIO01 4,79 €	YT15MM A05 4,79 €	YT15MM G05 3,79 €	YT15MM C05 4,79 €	YT15MM P05 3,79 €	YT15MM O05 2,99 €	YT15MM BIO2 4,79 €	YT15MM BK05 4,49 €	YT15MM PK05 4,99 €	YT15MM T05 4,49 €
	YT12YM G02 4,99 €	YT10YM B05 3,49 €	YT12YM BIO01 4,99 €	YT10YM ANT101 4,99 €	YT12YM G04 3,99 €	YT13YM CA01 3,99 €	YT12YM P04 3,99 €	YT10YM O06 3,49 €	YT12YM BIO02 4,99 €	YT12YM B02 4,99 €	YT12YM P01 4,99 €	YT12YM T01 4,99 €
	YT10YM G02 2,99 €	YT11YM B01 2,99 €	YT14YM BIO1 3,99 €	YT14YM A01 3,99 €	YT10YM G01 2,99 €	YT14YM CLEAN01 2,99 €	YT12YM P101 2,99 €	YT10YM O01 2,99 €	YT14YM BIO2 3,99 €	YT11YM B02 3,49 €	YT11YM P02 3,49 €	YT11YM T01 3,99 €
	YT11AS G02 4,99 €	YT11AS B01 3,49 €	YT11AS BIO01 4,99 €	YT11AS ANT101 4,99 €	YT11AS G01 3,99 €	YT13AS CA01 4,99 €	YT13AS P01 3,99 €	YT11AS O01 3,49 €	YT12AS BIO02 4,99 €	YT11AS B02 4,99 €	YT11AS P01 4,99 €	YT11AS T01 4,99 €



**ProWrap Mini Fun**

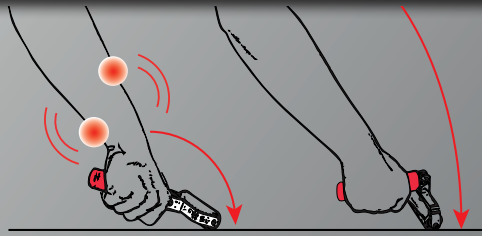
Only for the best customers in the world: You! The Fun-Squeegee for your keyring. There has not to be serious sense all the time - sometimes "just fun" is enough.



Original size

## YelloRoller Flexi

Super ergonomic due to unique 3-way adjustment. 0°, 45° and 90°. Available in five different sizes: 50cm, 70cm, 100cm, 150cm and 200cm and two different hardnesses.



0° Angle:  
Complete Pressure comes from the forearm. :(  
90° Angle:  
More Pressure from the upper part of the body can support the work



## YelloRoller Plain

The more inexpensive version of our rollers. Perfect for rough tasks!



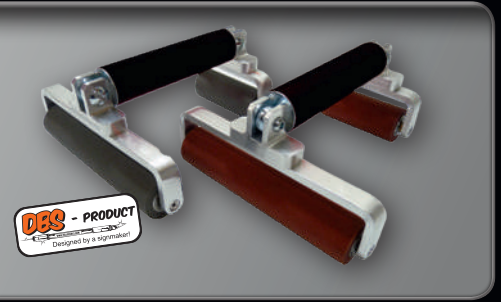
## YelloRoller Flexi Extension

The practical arm extension for our FlexiRoller. Call for custom sizes!



## YelloRoller Duo

All muscles stay relaxed even at bigger signs and graphics.



## YelloRoller Ziggy

Our amazing friend **Zigfrid Tijunelis** came up with his special roller design. Since he loves to apply vinyls on windows or flat surfaces with rollers, he designed a double roller in order to reach the very last part along the frames as shown in the picture. Since squeegees often leave scratches, he likes using scratch-free rubber rollers.

The problem with rollers with u-shaped frames around the roller is that they do not allow to roll all the way to the end of the frame. That's why he came up with the idea for a special roller design that allows you to apply your graphics scratch-free all the way to the inner frame. Awesome job, dear Zigfrid!



Roll width: 16 cm (6.2 Inches)  
Roll diameter: 49 mm (1.9 Inches)

## YelloRoller Wheel

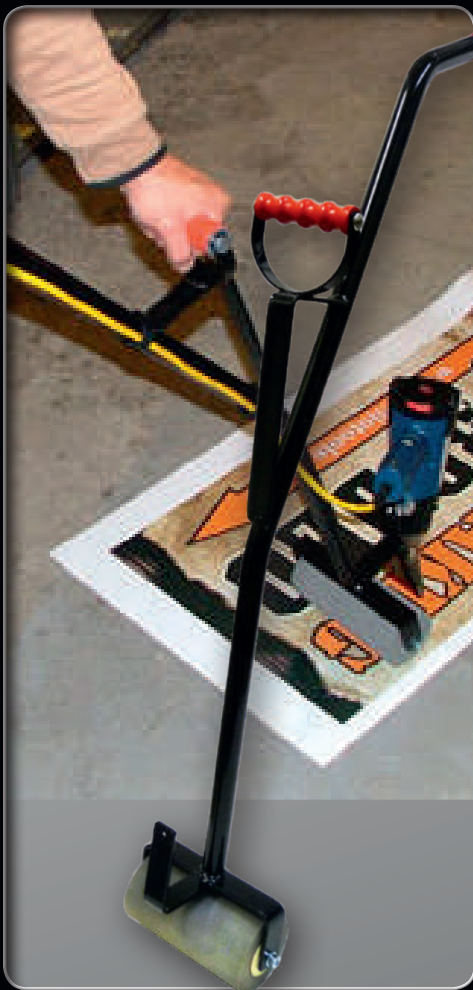
The perfect pressure roller for door gaps and extremely rugged surfaces. Wheels are available in two different versions: as a soft foam roller in 12mm width, with a special circular rubber profile for deep door gaps and an angular felt wheel for adjusted internal angles.



YelloThin Foam Wheel



YelloThin RubberWheel



**StreetRoller Basic**

apply all kinds of floor graphics fast and easy.



**WallRoller Hot Set**

The WallRoller „heat“ with quick-release-bracket for our WRAPGUN. Available also for newer AND older STEINEL Heatgun versions.



**WallRoller Basic**

designed for „cold-rolling“ of sensitive-to-heat materials.



**WallRoller Handy Mono**

For work even at tricky and sensitive surface-parts. (without rolls)



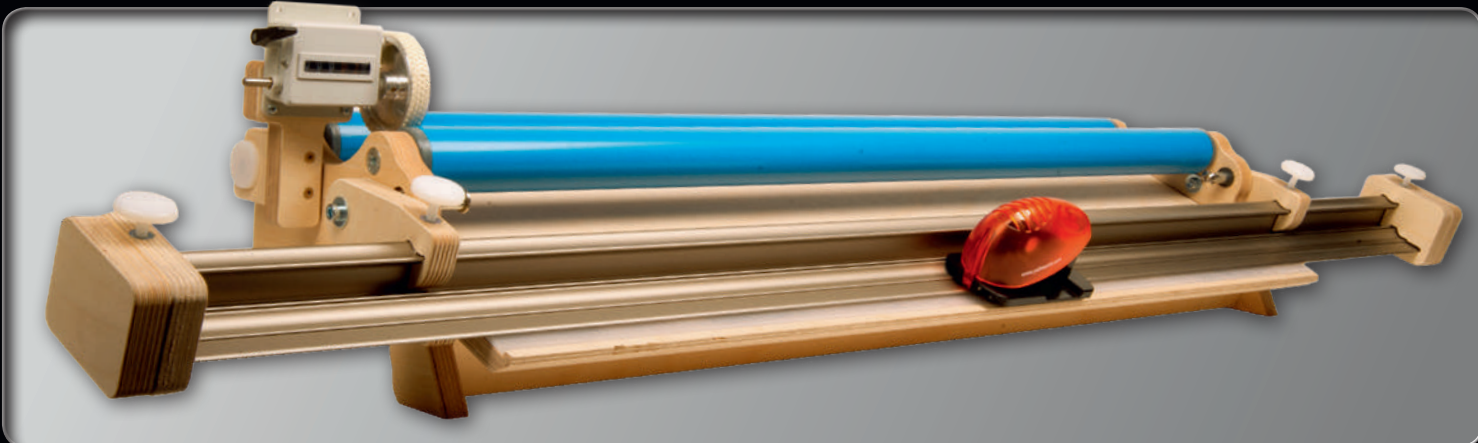
**WallRoller Handy**

Perfect Handling and Leverage due to the "2-Roll Technology". You will LOVE it :)



**WallRoller Chrissi**

Created by our customer "Chrissi" - wall roller with three handles.

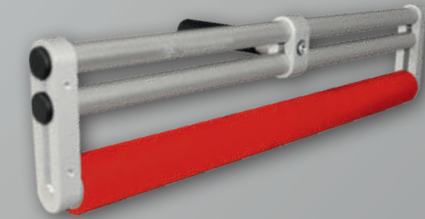


**Appfix Roll N'Cut**

This great Application-Aid is not only perfect for applying - it also cuts and measures the vinyl on demand. Isn't this what you have waited for?

# YelloRoller Maxx

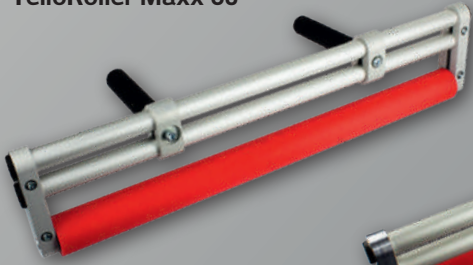
With the success of our popular oversized wooden squeegee's, customers had asked for a similar option with our rollers. Straight from the Yellotools "Brewhouse" comes this awesome high quality XXL Roller designed by our very own Stephan Engel. Made in Germany with love and care, our YelloRoller Maxx features a centered grip for ideal pressure distribution.



YelloRoller Maxx 60



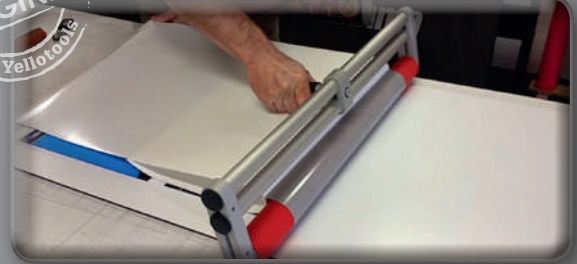
YelloRoller Maxx 30



YelloRoller Maxx 60 TwinHandle



YelloRoller Maxx 60 Duo



Appfix Flexi 130

360° - rotary construction which makes this an indispensable signmaking tool.

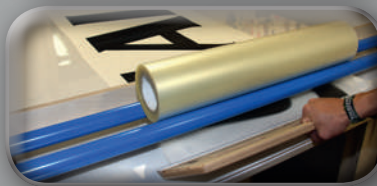


## Appfix

The perfect applicator with flexible workbench brackets. From 70cm up to 160cm.



Other sizes on request.



\* The price is without table

## Appfix Racer 1x2m

Easily slide your application tape back and/or forth. For almost any table size.



## PrintJoggle

Our Yellotools PrintJoggle Set allows you to align your graphic perfectly on any substrate rectangular surface. Simple place the BaseCorner on the corner and the StickPanel on the side and adjust to the desired length.

There's no more guessing, using your fingers to put a slight mark on your graphic or marking it which could potentially damage your graphic. It's the simple solution for an everyday pain!



## EdgeWrap Cutter

Our longtime friend and customer **Lars Chabalowitz** from [www.surteco.de](http://www.surteco.de) came up with a perfectly brilliant idea "around the corner" (literally). For his new HAMMER product - an ingenious structured film, based on PAPER (yes, you read that correctly) which can be glued on to signs or furniture lids. He asked us for a gap free cutting template, either for "end-to-end" or single overlapping cuts.

So Lars **LOVES** our solution...  
When will you follow him? :)



P.S.: furniture filming or furniture cocooning is becoming more popular and is really a cool addition to your portfolio!



For example, simply place the EdgeWrapCutter on the corner and cut along the grooves - then fold down, done :)